



The open platform company

Milestone Systems

XProtect® Smart Client 2016

Hardware acceleration guide

Contents

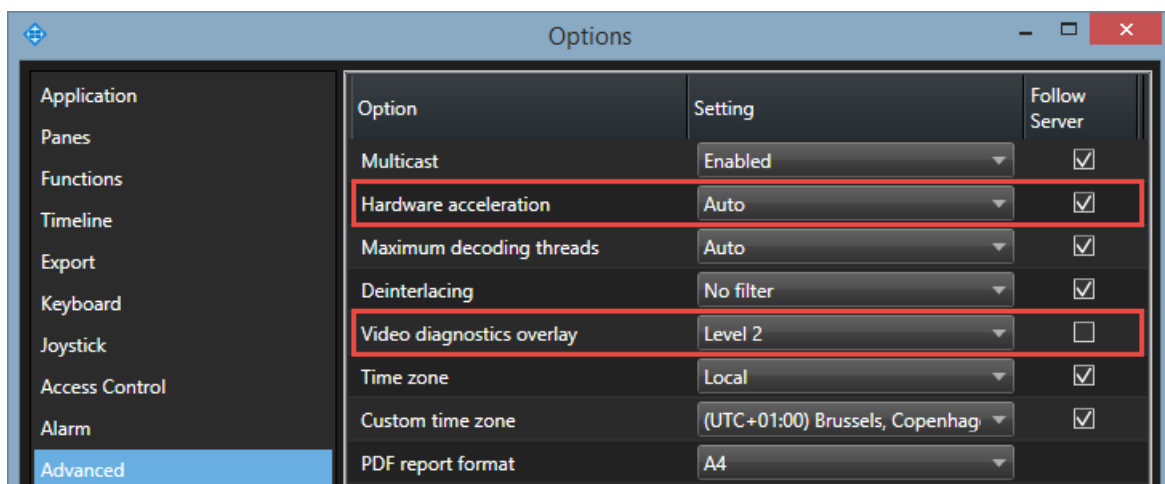
How to enable hardware acceleration	3
Verify your operating system	4
Check CPU Quick Sync support	5
Examine the Device Manager	6
Enable the Intel HD adapter in the BIOS	7
Update the Intel video driver.....	8

How to enable hardware acceleration

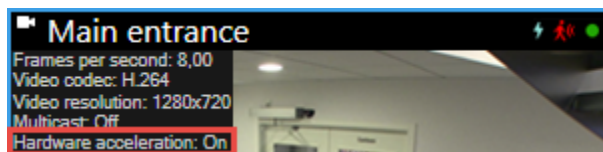
In XProtect® Smart Client you can use hardware accelerated video decoding. Hardware acceleration moves some of the CPU load to the Graphics Processing Unit (GPU). This improves the decoding capability and performance of the computer. This is particularly useful when you view multiple H.264 video streams with high frame rate and high resolution.

In XProtect Smart Client there are two settings for hardware acceleration: **Auto** and **Off**. Go to **Options > Advanced > Hardware acceleration**. The default setting is **Auto**.

The current status of the stream including the hardware acceleration status is visible by enabling **Video diagnostics overlay > Level 2**.



Hardware acceleration has the status **On** or **Off** in the video diagnostics overlay in the view item.



If **Hardware acceleration** is **Off**, this guide helps you determine if hardware acceleration is available at all. To check if your computer is capable of hardware acceleration, you need to make sure that Intel® Quick Sync is supported. You can do this by examining your computer in the following areas:

1. Operating system
2. CPU
3. Device manager
4. BIOS
5. Video driver

Verify your operating system

Make sure your operating system is Microsoft® Windows® 8.1, Windows® 10, Windows® Server 2012 or newer.

Only non-virtual environments are supported.

Check CPU Quick Sync support

To find out if your processor supports Intel Quick Sync Video, visit the Intel website <http://ark.intel.com/search/advanced?s=t&quicksyncvideo=true>.

In the menu, set **Technologies** > **Intel Quick Sync Video** filter to **Yes**.

Intel® Quick Sync Video | Yes ×

Modify Filters

Clear Filters Search

+ Essentials

− Technologies

Intel® Turbo Boost Technology [†]

Select... ▼

Intel® Hyper-Threading Technology [‡]

Select... ▼

Intel® Wireless Display

Select... ▼

Intel® Quick Sync Video

Yes ▼

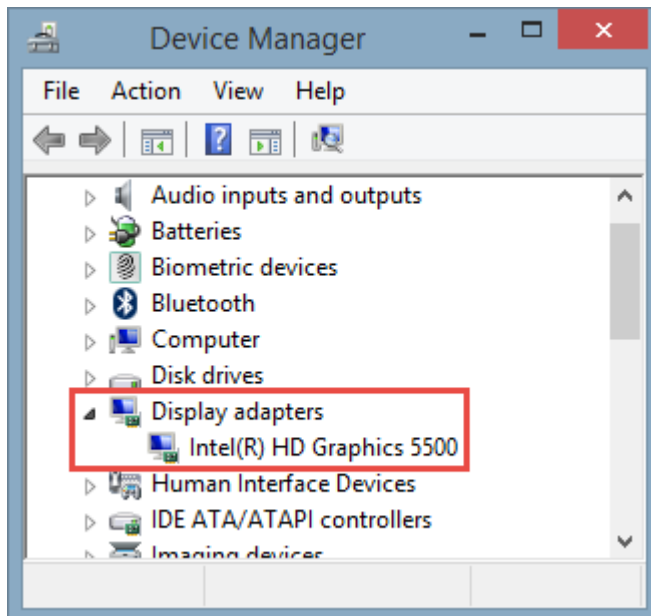
472 Matching Products

Compare	Product Name
Compare All +	
Compare +	Intel® Core™ m3-6Y30 Processor (4M Cache, up to 2.20 GHz)
Compare +	Intel® Core™ m5-6Y54 Processor (4M Cache, up to 2.70 GHz)
Compare +	Intel® Core™ m5-6Y57 Processor (4M Cache, up to 2.80 GHz)
Compare +	Intel® Core™ m7-6Y75 Processor (4M Cache, up to 3.10 GHz)

Examine the Device Manager

The Intel HD display adapter must be present in Windows Device Manager.

You can connect your displays to any display adapter available. If a more powerful display adapter is available in your computer, typically NVIDIA® or AMD®, connect your displays to this adapter to use both resources. Intel HD adapter for hardware accelerated decoding and NVIDIA or AMD for rendering.



If the Intel HD adapter is not present, you must enable the display adapter in the computer BIOS (see "Enable the Intel HD adapter in the BIOS" on page 7).

Enable the Intel HD adapter in the BIOS

If another display adapter, for example NVIDIA or AMD, is available in your computer, the onboard Intel HD display adapter may be disabled and you must enable it.

The Intel HD display adapter is located on the motherboard as a part of the CPU. To enable it, look for graphics, CPU or display settings in the computer BIOS. The vendor's motherboard manual may be helpful to find the relevant settings.

If changing the settings does not enable the onboard Intel HD display adapter, you can try moving it to another slot and then connect the display to the motherboard. In some cases, this can enable the onboard display adapter.

Update the Intel video driver

Make sure that the driver version for your Intel HD display adapter supports Intel Quick Sync Video. You can do this by updating the driver version to the newest version available from Intel. There are two ways of doing this. Manual download and install or using the Intel Driver Update Utility.

Manual download and install:

1. Go to the Intel download website <https://downloadcenter.intel.com/>
2. Enter the name of your integrated display adapter
3. Manually download and install the driver

For automatic detection and updates of Intel components and drivers:

1. Download Intel Driver Update Utility http://www.intel.com/p/en_us/support/detect
2. Auto search for the drivers
3. Choose to update the driver for Intel HD Graphics

About Milestone Systems

Milestone Systems is a global industry leader in open platform IP video management software, founded in 1998 and now operating as a stand-alone company in the Canon Group. Milestone technology is easy to manage, reliable and proven in thousands of customer installations, providing flexible choices in network hardware and integrations with other systems. Sold through partners in more than 100 countries, Milestone solutions help organizations to manage risks, protect people and assets, optimize processes and reduce costs. For more information, visit:

<http://www.milestonesys.com>

